

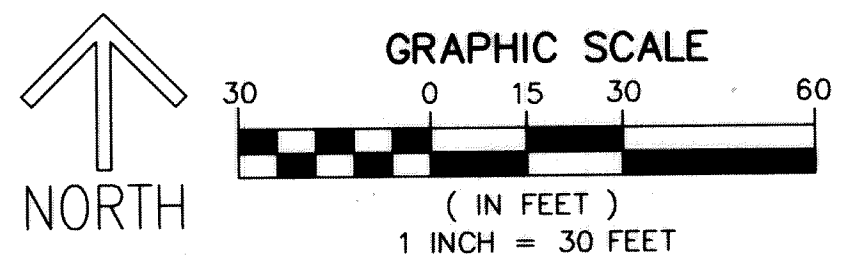
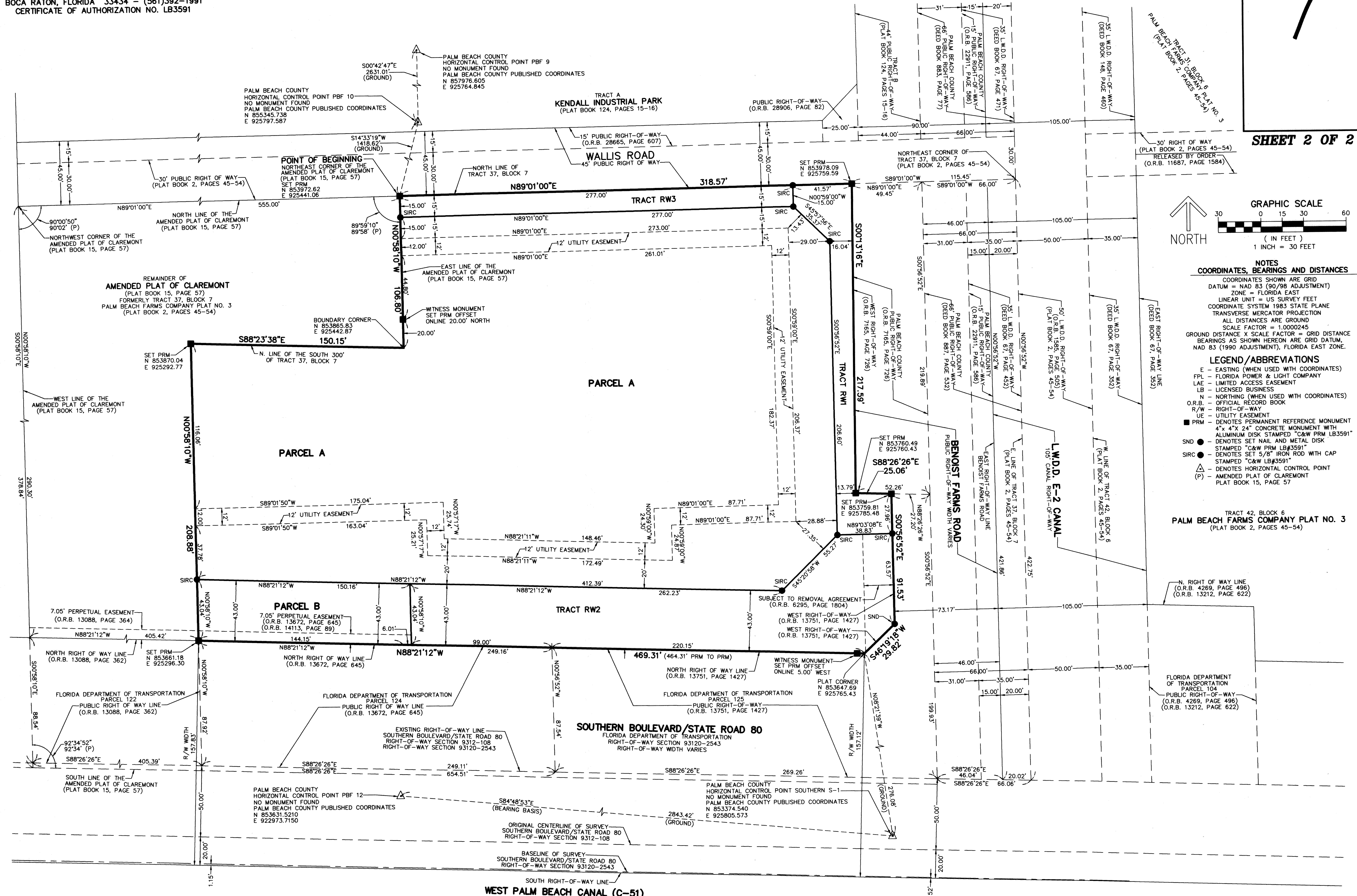
THIS INSTRUMENT PREPARED BY
 DAVID P. LINDLEY
 OF
CAULFIELD and WHEELER, INC.
 SURVEYORS - ENGINEERS - PLANNERS
 7900 GLADES ROAD, SUITE 100
 BOCA RATON, FLORIDA 33434 - (561)392-1991
 CERTIFICATE OF AUTHORIZATION NO. LB3591

WAWA SB 1327 MUPD

BEING A REPLAT OF A PORTION OF THE AMENDED PLAT OF CLAREMONT, AS RECORDED IN PLAT BOOK 15, PAGE 57,
 TOGETHER WITH A PORTION OF TRACT 37, BLOCK 7, THE PALM BEACH FARMS CO. PLAT NO. 3, AS RECORDED IN PLAT BOOK 2, PAGES 45 THROUGH 54,
 BOTH OF THE PUBLIC RECORDS OF PALM BEACH COUNTY, FLORIDA
 LYING IN SECTION 32, TOWNSHIP 43 SOUTH, RANGE 42 EAST, PALM BEACH COUNTY, FLORIDA

7

SHEET 2 OF 2



NOTES
COORDINATES, BEARINGS AND DISTANCES
 COORDINATES SHOWN ARE GRID
 DATUM = NAD 83 (90/98 ADJUSTMENT)
 ZONE = FLORIDA EAST
 LINEAR UNIT = US SURVEY FEET
 COORDINATE SYSTEM 1983 STATE PLANE
 TRANSVERSE MERCATOR PROJECTION
 ALL DISTANCES ARE GROUND
 SCALE FACTOR = 1.0000245
 GROUND DISTANCE X SCALE FACTOR = GRID DISTANCE
 BEARINGS AS SHOWN HEREON ARE GRID DATUM,
 NAD 83 (1990 ADJUSTMENT), FLORIDA EAST ZONE.

LEGEND/ABBREVIATIONS
 E - EASTING (WHEN USED WITH COORDINATES)
 FPL - FLORIDA POWER & LIGHT COMPANY
 LAE - LIMITED ACCESS EASEMENT
 LB - LICENSED BUSINESS
 N - NORTHING (WHEN USED WITH COORDINATES)
 O.R.B. - OFFICIAL RECORD BOOK
 R/W - RIGHT-OF-WAY
 UE - UTILITY EASEMENT
 PRM - DENOTES PERMANENT REFERENCE MONUMENT
 4" x 4" x 24" CONCRETE MONUMENT WITH
 ALUMINUM DISK STAMPED "C&W PRM LB3591"
 SND - DENOTES SET NAIL AND METAL DISK
 STAMPED "C&W PRM LB3591"
 SIRC - DENOTES SET 5/8" IRON ROD WITH CAP
 STAMPED "C&W LB3591"
 Δ - DENOTES HORIZONTAL CONTROL POINT
 Δ - AMENDED PLAT OF CLAREMONT
 PLAT BOOK 15, PAGE 57

TRACT 42, BLOCK 6
PALM BEACH FARMS COMPANY PLAT NO. 3
 (PLAT BOOK 2, PAGES 45-54)

N. RIGHT OF WAY LINE
 (O.R.B. 4269, PAGE 496)
 (O.R.B. 13212, PAGE 622)

FLORIDA DEPARTMENT
 OF TRANSPORTATION
 PARCEL 104
 PUBLIC RIGHT-OF-WAY
 (O.R.B. 4269, PAGE 496)
 (O.R.B. 13212, PAGE 622)

WEST PALM BEACH CANAL (C-51)